

MaxSolutions Online: Facility Scheduling

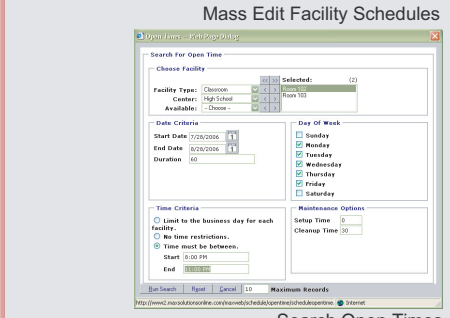
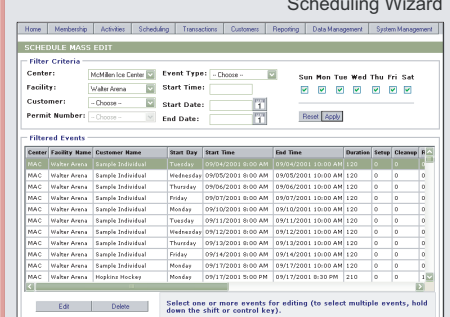
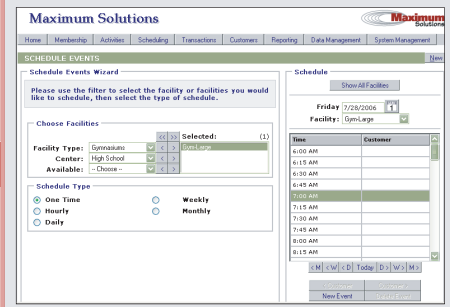
Working on a limited budget? Try our hosted Facility Scheduling Application.

The MaxSolutions Online Facility Scheduling application enables users to manage their facilities from any internet accessible location. This is also an excellent solution for our users who have the problem of scheduling their facilities that are located and various locations where a local LAN set-up isn't feasible.

For gyms and fields to rooms and even ice sheets, and more, MaxSolutions Online Facility Scheduling application will accomplish all of your scheduling tasks with the greatest benefit of all, **NO DOUBLE BOOKINGS!**

Key Internal (i.e. administrative) Features Include

- **Unlimited Centers and Facilities.** Separate facilities into centers and designate hours of operation, hourly rates (weekday, weekend, summer, winter, etc.), and flat rates for each facility. Combined center/facility names displayed in pick lists throughout the system. Makes data entry faster and easier.
- **Sub-Facilities.** Book out sections of a facility separately (i.e. 1/2 rink, 1/3 field, etc.).
- **Prorated rate calculation.** Calculate hourly rates automatically when scheduled events cross rate break times (i.e. prime vs. non-prime time hours).
- **Book Recurring Events.** Hourly, Daily, Weekly, and Monthly scheduling tools help schedule repetitive dates/times.
- **Mass Edit.** Search and/or sort schedule data; easily edit or delete multiple events at once.
- **Block Out Holidays.** Block out multiple dates for multiple facilities in one easy step.
- **Rate Levels and Rate Structures.** Supports multiple rate levels (i.e. Resident, Non-Resident, Non-Profit, etc.) and multiple rate structures (i.e. Flat Rates, Hourly Rates, etc.). Ability to offer full or partial refunds for facility reservations.
- **Items and Packages.** Designate other charges (i.e. tables, chairs, extra maintenance) for easy addition to scheduled events.
- **Reports.** Over 30 different administrative, facility scheduling, and financial reports.
- **Full Integration Between Applications.** Shared customer and financial databases, financial reports, and facility reservations between the facility and activity applications.
- **Share Facilities.** The system always warns of conflicts, but schedulers have the option to book two or more customers into a facility together.
- **Facility Contract Report.** Print standard facility contract for one or multiple customers.
- **Expedited Booking and Invoicing Process.** Upon completion of each booking, the user has the option of preparing an invoice immediately or waiting until a later date.
- **Customized Invoices by Location.** Select the appropriate Center address to be displayed in the invoice header.
- **Refund capability.** Ability to offer full or partial refunds for facility reservations.
- **Revenue Tracking by Location.** Financial reports can be generated by each location.
- **Customer-specific GL Accounts.** GL Accounts numbers can be assigned to specific customers, there by overriding the default Facility GL Account.
- **Combined center/facility names** displayed in pick lists throughout the system. Makes data entry faster and easier.



Search Open Times

Invoice No.	Invoice Date	Due Date	Invoice Amount	Payments	Credits	Amount Due
557-0	8/10/2006	8/10/2006	\$ 44.23	\$44.23	\$ 0.00	\$ 0.00

Please return this part with your payment.

Invoice No.	Invoice Date	Due Date	Invoice Amount	Payments	Credits	Amount Due
557-0	8/10/2006	8/10/2006	\$ 44.23	\$44.23	\$ 0.00	\$ 0.00

Activity	Date	Days	Location	Description/Code	Time	Participants	Amount Charged	
7012003	Tue		Gym-Small/High School	Advanced Dog Obedience 1	7:00-8:00 PM - 3:00-3:00 PM	1	\$44.00	
9200203							\$0.23	
							SubTotal	\$44.00
							Tax	\$0.23
							Activity Total	\$44.23

Customer Invoicing

Hosted Facility Scheduling Enhancement Applications

Essential Element (Customer Interface)

- **Fully customizable host web interface.** Customers can set-up accounts, manage them, request information, view schedules, book facility's, and more.
- **Online Event Titles.** Select from the following Online display options for each event: "Custom" (enter a specific title), "General" (enter a generic title), or "Default" (enter no title and the system automatically displays the word "Reserved").
- **Online Facility Schedules.** Community members can view facility schedules online.
- **Search Open Time.** Individuals can search for available rental space by a variety of ways.
- **Immediate Confirmation.** Reservations are confirmed as soon as payment is entered.



Credit Card Processing

- Online reservations require payment with a credit card.
- Very low transaction rates on your credit card processing thru a 3rd party vendor (Verisign Payflow Pro).
- No backlog time on your funds for return/refunds, use your merchant account.