

DOWNLOADING THE LATEST MAXENTERPRISE REVISION

Single Computer

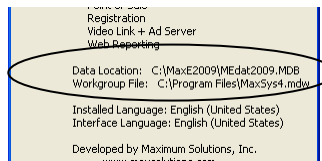
- From the MaxEnterprise Switchboard:
 - Note the current revision installed on your PC above the Feature Summary column
 - Select the Help menu
 - Click About
 - Note the Data Location
 - Exit MaxEnterprise
 - Go to the Maximum Solutions website:
<http://www.maxsolutions.com/maxsolutions/download.asp>
 - Select the appropriate MaxEnterprise revision (e.g., 2006, 2007, 2009, etc.)
 - The File Download screen will appear
 - Click the Run button
 - The Unknown Publisher security message will appear
 - Click the Run button
 - The WinZip Self-Extractor screen will appear
 - Note the “Unzip to folder” location. If the default program folder location of C:/MaxE200# was changed during installation, you must browse to the correct program folder location
 - Click the Unzip button
 - A confirmation will appear
 - Click OK
 - Click Close
 - You may now open MaxEnterprise
 - If your database is not located in the C:/MaxE200# folder there will be a message ‘No tables attached...’. Click OK on that message and choose ‘MS Access’ or ‘SQL Server’ on the Data Source screen. If ‘MS Access’ is chosen a ‘Where’s Your Data’ screen will appear. Browse to the MEdat200#.mdb previously noted from the ‘Data Location’ field on the About screen. If ‘SQL Server’ is chosen a screen will appear where the SQL credentials can be entered.
 - NOTE: When you open MaxEnterprise, a screen may appear alerting you that table indexes are being refreshed. If this occurs, click the OK button. Note: You may also need to re-select your facilities on the Schedule Grid screen



Server Environment or Peer-to-Peer Network

Important: Revisions include data structure changes that require all users to be out of the program when applying the update. Also, once the update is applied on one workstation then all other workstations must be updated before they will be allowed back in the program.

- **ON INITIAL WORKSTATION (From the MaxEnterprise Switchboard)**
 - Note the current revision installed on your PC above the Feature Summary column
 - Select the Help menu
 - Click About
 - Note the Data Location
 - Exit MaxEnterprise
 - Go to the Maximum Solutions website:
<http://www.maxsolutions.com/maxsolutions/download.asp>
 - Select the appropriate MaxEnterprise revision (e.g., 2006, 2007, 2009, etc.)
 - The File Download screen will appear
 - Click the Save button
 - Select the appropriate folder location (Note: We recommend that you add a folder in the data location for program updates)



- Click Save
 - The Download complete screen appears
 - Click the Run button
 - The Unknown Publisher security message will appear
 - Click the Run button
 - The WinZip Self-Extractor screen will appear
 - Note the “Unzip to folder” location. If the default program folder location of C:/MaxE200# was changed during installation, you must browse to the correct program folder location
 - Click the Unzip button
 - A confirmation will appear
 - Click OK
 - Click Close
 - You may now open MaxEnterprise
 - If your database is not located in the C:\MaxE200# folder there will be a message ‘No tables attached...’. Click OK on that message and choose ‘MS Access’ or ‘SQL Server’ on the Data Source screen. If ‘MS Access’ is chosen a ‘Where’s Your Data’ screen will appear. Browse to the MEdat200#.mdb previously noted from the ‘Data Location’ field on the About screen. If ‘SQL Server’ is chosen a screen will appear where the SQL credentials can be entered.
- **ON REMAINING WORKSTATIONS:**
 - Exit MaxEnterprise
 - Locate the update file and double click the icon
 - The Unknown Publisher security message will appear
 - Click the Run button
 - The WinZip Self-Extractor screen will appear
 - Click the Unzip button
 - A confirmation will appear
 - Click OK
 - Click Close
 - You may now open MaxEnterprise
 - If your database is not located in the C:\MaxE200# folder there will be a message ‘No tables attached...’. Click OK on that message and choose ‘MS Access’ or ‘SQL Server’ on the Data Source screen. If ‘MS Access’ is chosen a ‘Where’s Your Data’ screen will appear. Browse to the MEdat200#.mdb previously noted from the ‘Data Location’ field on the About screen. If ‘SQL Server’ is chosen a screen will appear where the SQL credentials can be entered.
 - NOTE: When you open MaxEnterprise, a screen may appear alerting you that table indexes are being refreshed. If this occurs, click the OK button. Note: You may also need to re-select your facilities on the Schedule Grid screen

If there are any questions or concerns, please contact Technical Support at 1-800-976-6646 or support@maxsolutions.com.